

Razorback Iron Ore Project – Managing our community impact

February 2024

Our sustainability philosophy

Magnetite Mines recognises that sustainable mining of iron ore can only be achieved by working in partnership with local communities, and through collaboration we can minimise our environmental footprint.

With a commitment to embed a focused sustainability culture from the outset, Magnetite Mines aims to deliver the Razorback Project with leading environmental and social performance.

foresight

Under our best-practice ‘foresight’ sustainability platform, Magnetite Mines strives to rigorously assess its potential performance, reduce its negative impacts and maximise its benefits.

Environmental and social studies

Magnetite Mines has spent over three and a half years completing the necessary studies for the development of the Razorback Project Mining Lease Proposal.

With the support of consulting environmental specialists, Eco Logical Australia, the existing environment and social structures have been comprehensively characterised. Assessments have included flora, fauna and habitats, aquatic ecology, regional groundwater systems and catchments, background noise and air quality profiles, soil resources, cultural heritage, social conditions and traffic levels.

With this detailed understanding of the Project’s setting, potential impacts can be identified, modelled and assessed.

Social

A detailed social impact assessment has been completed for the Project and included extensive regional stakeholder engagement. Outcomes highlighted a broad range of issues, with more prominent impact themes including the Project’s effects on existing land uses, housing supply and cost, employment and business opportunities, competition for labour, and loss of amenity.



Magnetite Mines will continue to work with local communities to plan a sustainable future together. Existing agreements with the District Council of Peterborough and Ngadjuri Nation will drive a new level of cooperation around the Razorback Project.

Economic

Economic modelling demonstrates the extensive local, regional and State-level development potential of project operations, as demonstrated by direct employment and additional economic activity (as Gross State Product) outcomes.

South Australia	Regional SA	Peterborough
403 jobs	134 jobs	36 jobs
\$1bn economic value annually	\$192m economic value annually	\$9m economic value annually

Traffic

The Razorback Project will use existing public roads during construction and operations phases, with the regional highways network supporting heavy and light vehicle movements through key service corridors from Adelaide and the Upper Spencer Gulf.

Traffic modelling indicates significant existing capacity on these regional roads, with safety improvements proposed for three intersections in the Peterborough LGA – Barrier Highway/Rucioch Road, Barrier Highway/Petersburg Road and Cleary Road/Booborowie Road.

Magnetite Mines also proposes the upgrading of Rucioch and Crocker Roads as part of the main site access route.



Avoidance of peak traffic periods in local communities, road condition inspections and traffic complaint investigation are important impact controls for the project.

Air quality

The main air quality matter associated with the Razorback Project is dust generation. Dust may be generated from:

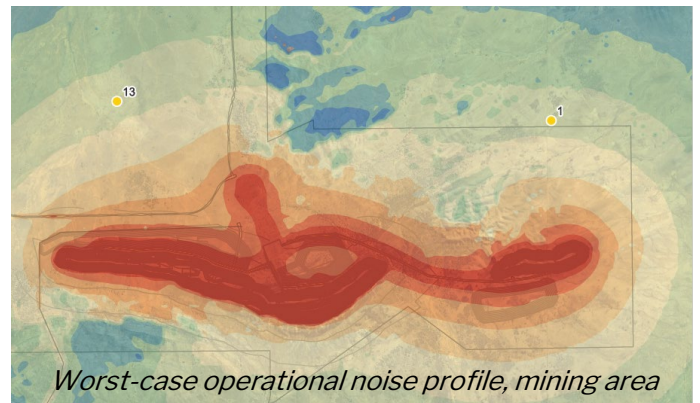
- construction activities
- mining and processing activities
- vehicle movements on unsealed roads
- stockpiles and exposed land surfaces.

Magnetite Mines will implement a range of controls to reduce impacts to the public and the environment (including native vegetation). Dust suppression, use of binders in road construction, land clearance strategies, dust monitoring and floral health surveys are key controls.

Air quality modelling indicates that, with the proposed controls, operations will comply with prescribed limits at all times with the exception of rare exceedances at the nearest receptor.

Noise

Higher levels of noise generated through project activities are principally contained within project sites. As noise will attenuate with distance, some noise may be discernible at selected nearby residences under certain conditions.



Only two receptors may experience night-time operational noise levels above relevant criteria, which can be mitigated with the adoption of additional noise controls.

Visual amenity

With a large footprint and long mine life, mining will change the appearance of the Razorback landscape.

The remoteness of the mining area means there are few accessible viewsheds of mining operations. It is anticipated that some landscape changes may be noticeable from the Lilydale and Oak Park Roads.

While mining activities are more readily visible from Pualco Range Conservation Park, the park is not open to public visitation.

